

Applying authentic-lime plaster to your ceilings can be a great option! By hand-waxing your finished plaster, you can add a soft, rich, reflective quality that will add opulence to your décor. For a greater dramatic effect, use deep, intense colors to enhance the texture and the movement in the plaster. The amount of drama can be controlled by altering these few factors:

(1) Type of product (2) Color (3) Artisan's technique (4) Hand waxing (5) Lighting.

Written by European Finishes

Saturday, 23 January 2010 10:25 - Last Updated Monday, 28 June 2010 02:16

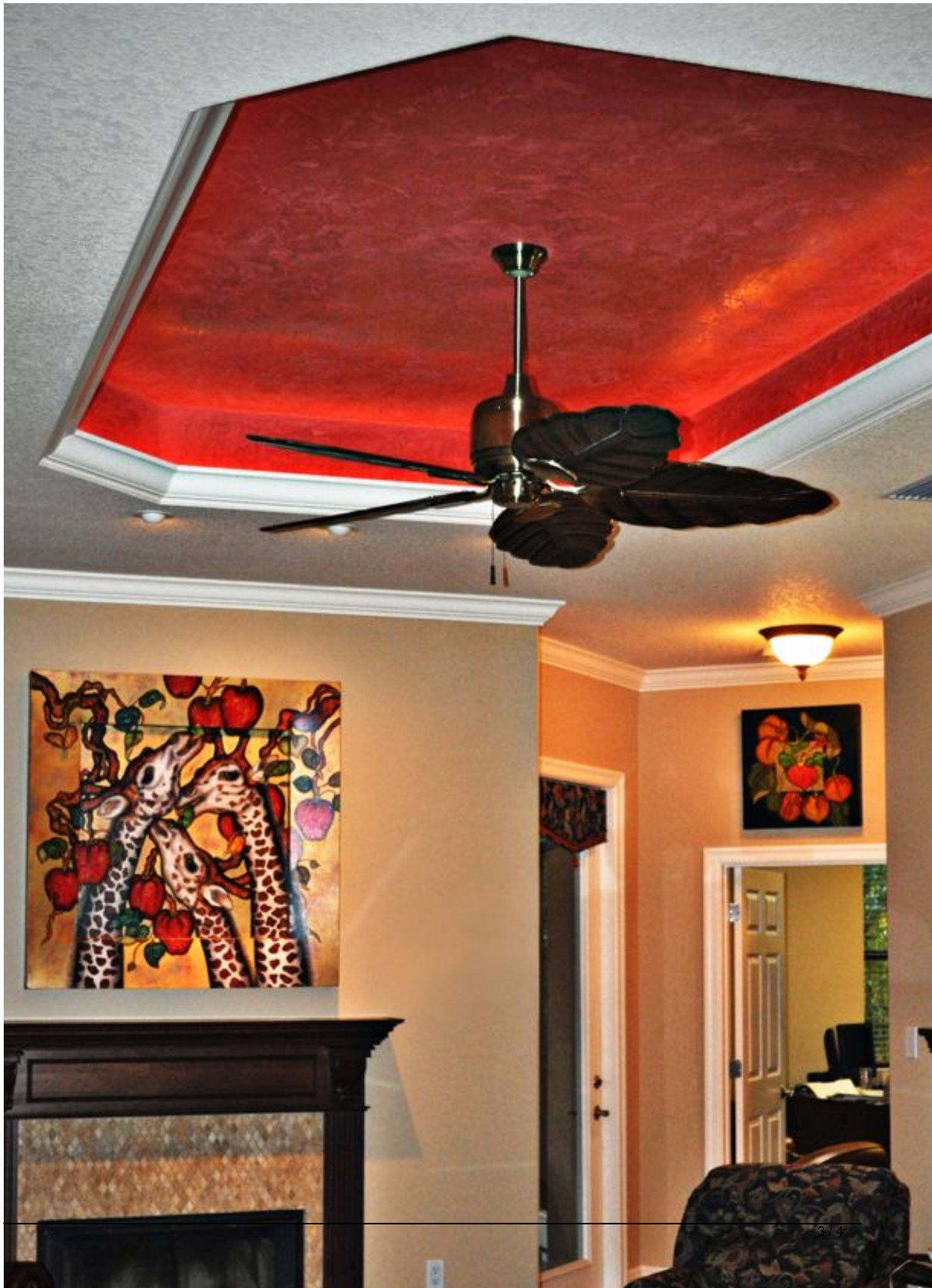
---



Written by European Finishes

Saturday, 23 January 2010 10:25 - Last Updated Monday, 28 June 2010 02:16

---



Written by European Finishes

Saturday, 23 January 2010 10:25 - Last Updated Monday, 28 June 2010 02:16

---